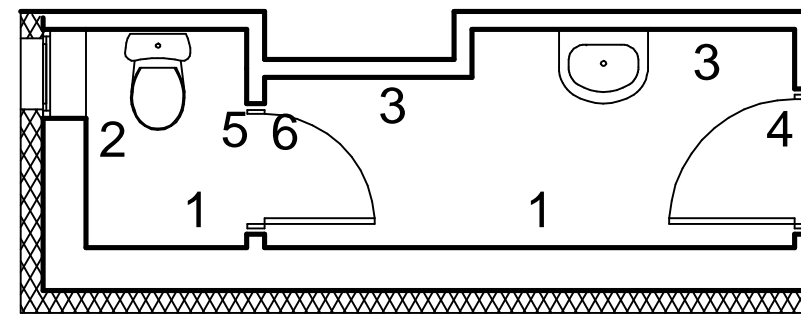
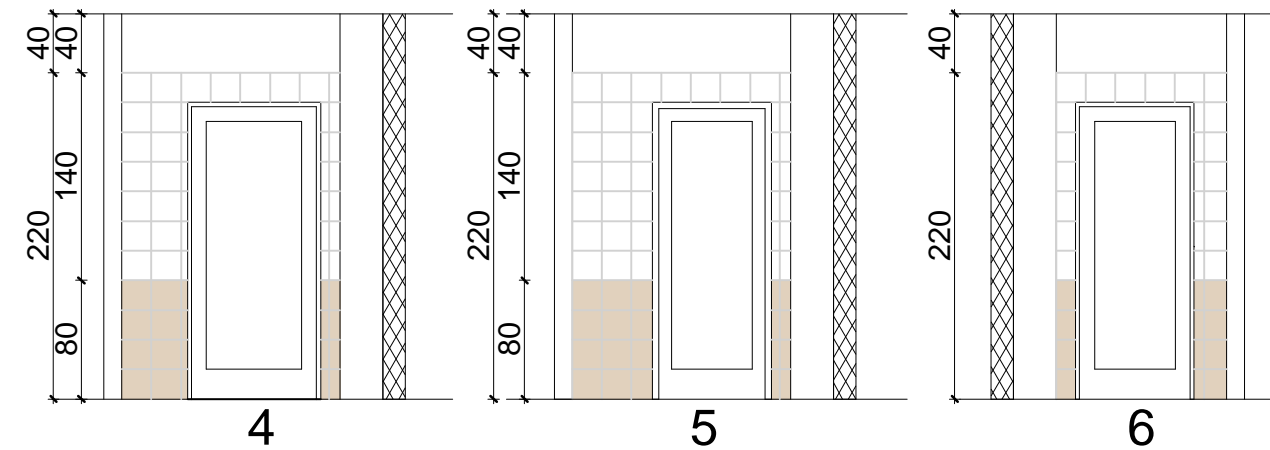
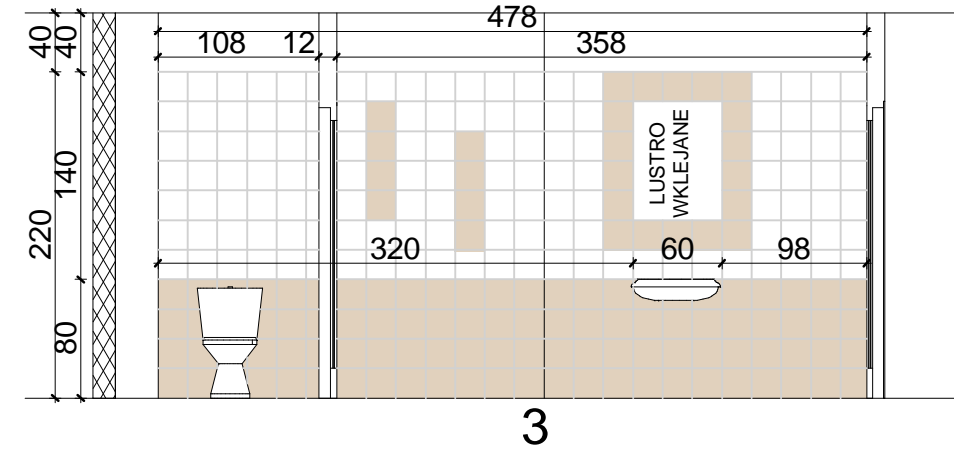
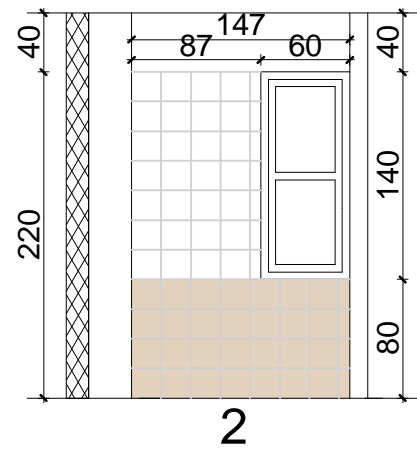
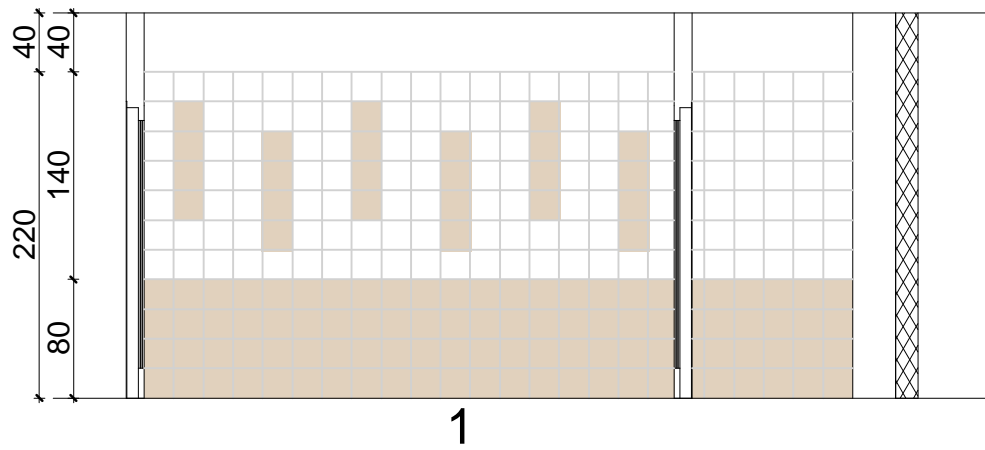
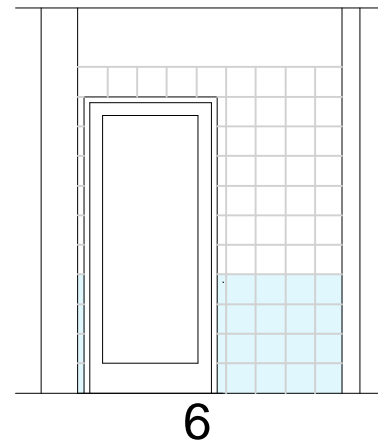
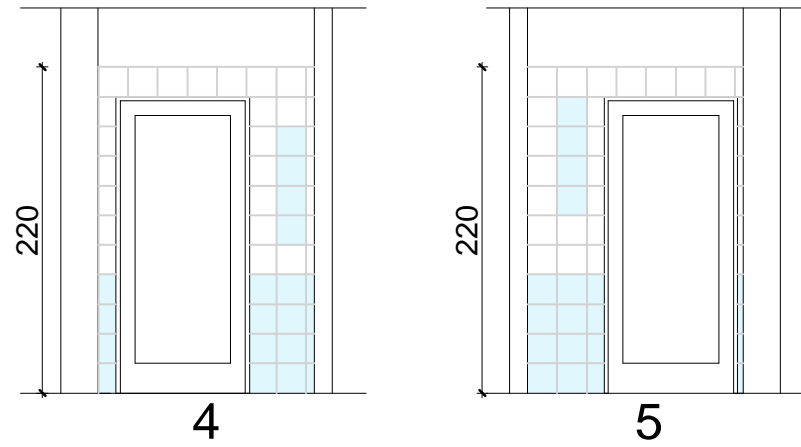
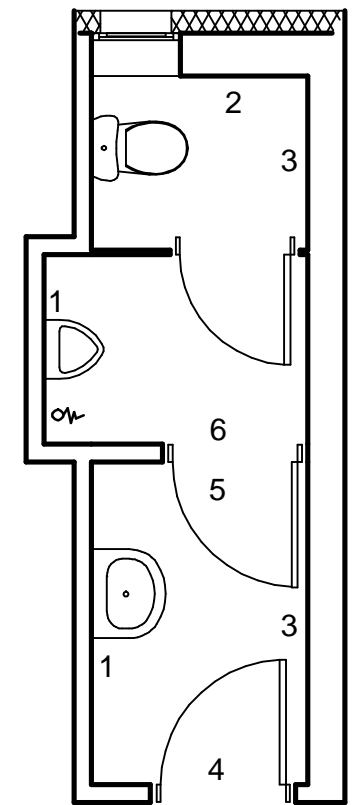
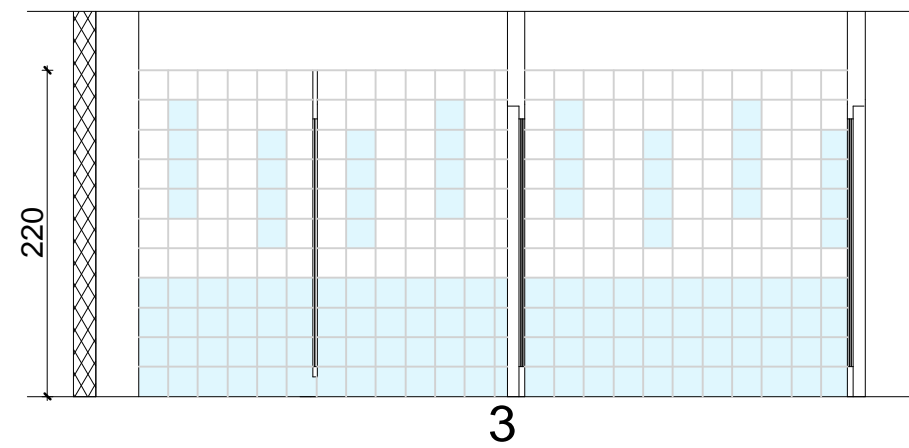
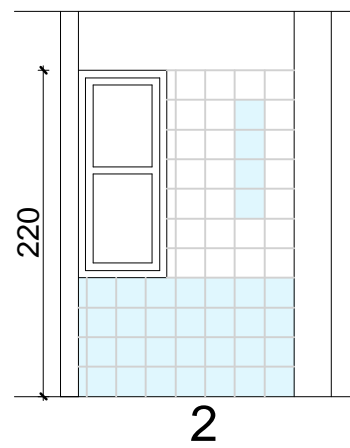
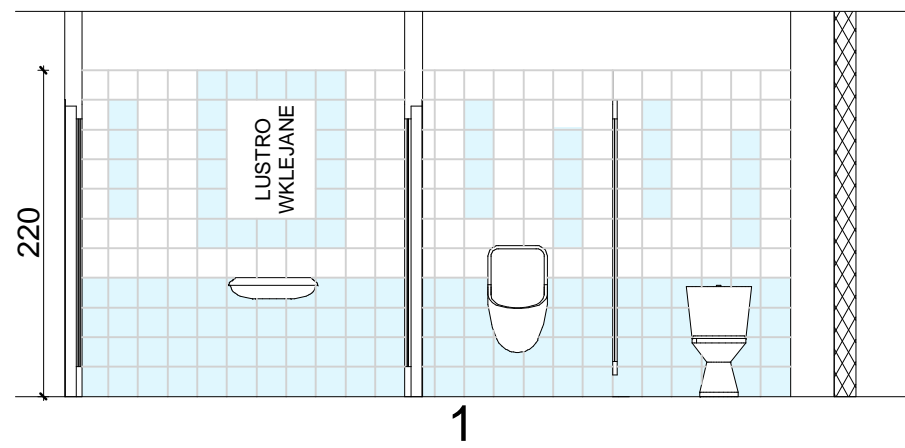





*WC DAMSKI, PARTER*



*WC M SKI, PARTER*



-  PŁYTKI 20x20 BE  
 PŁYTKI 20x20 BŁ KIT  
 PŁYTKI 20x20 BIAŁE

OBIEKT ADRES	DOBUDOWA PAWILONU WIELOFUNKCYJNEGO DO BUDYNKU GIMNAZJUM ZAWADY, UL. SZKOLNA 8 (DZ. NR 699, 701/3, K.M.3 OBR. ZAWADY, GM. POPÓW)			
TEMAT RYS.	UKŁAD PŁYTEK NA CIANACH - POZIOM PRZYZIEMIA			
architektura - projektant	arch. Beata Struzik nr upr. ZPN-VIII-7342/59/98	DATA	SKALA	NR RYS.
opracował	mgr in . Dominik Góra	06.2010	1:50	5